

# Safer Communities Partnership Board 2013

Priority 1 Property crime with special focus on burglary

Priority 2 Anti-social behaviour

Priority 3 Violent crime with a specific focus on domestic violence

Priority 4: Barnet Integrated Offender Management

Priority 5 Broader cost-effective intervention

Priority 6 Focus on places where offences take place

Priority 7 Tackle repeat victimisation

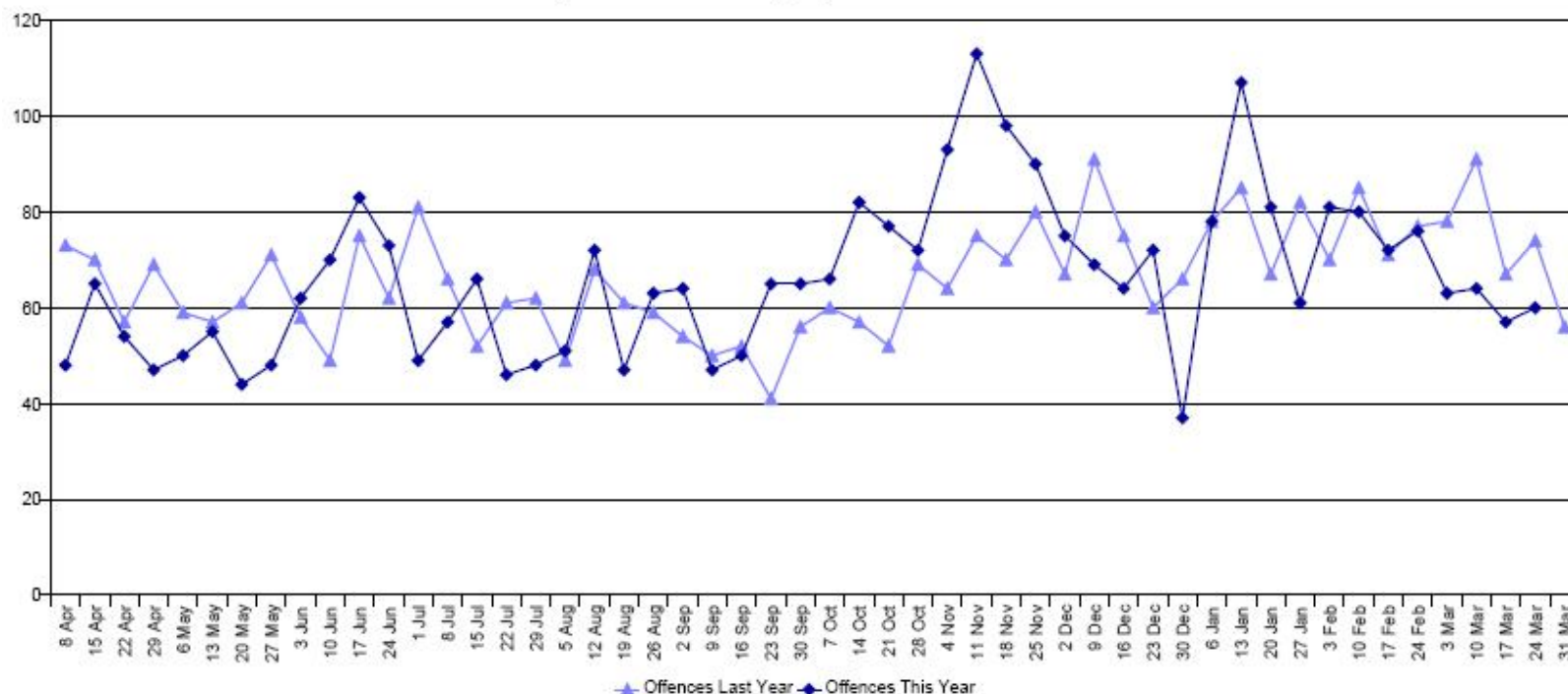
Priority 8 Building reassurance and confidence

**Completed by Richard Bell Crime and Disorder Information Manager LBB**



# Priority 1 Property crime with special focus on burglary

Weekly Residential Burglary Performance - Barnet



Year	Number of burglaries	Vs. 2010/11 baseline (3362)
2010/11	3362	-
2011/12 (to 28 March)	3397	+ 35
2012/13 (to 28 March)	3386	+ 24

Sanction Detections	13 Jan	20 Jan	27 Jan	3 Feb	10 Feb	17 Feb	24 Feb	3 Mar	10 Mar	17 Mar	24 Mar	FYTD Total	SD Rate
Last Year	0	1	3	0	3	1	0	6	14	2	8	338	9.9%
This Year	8	22	9	6	7	14	1	9	1	18	21	431	12.7%



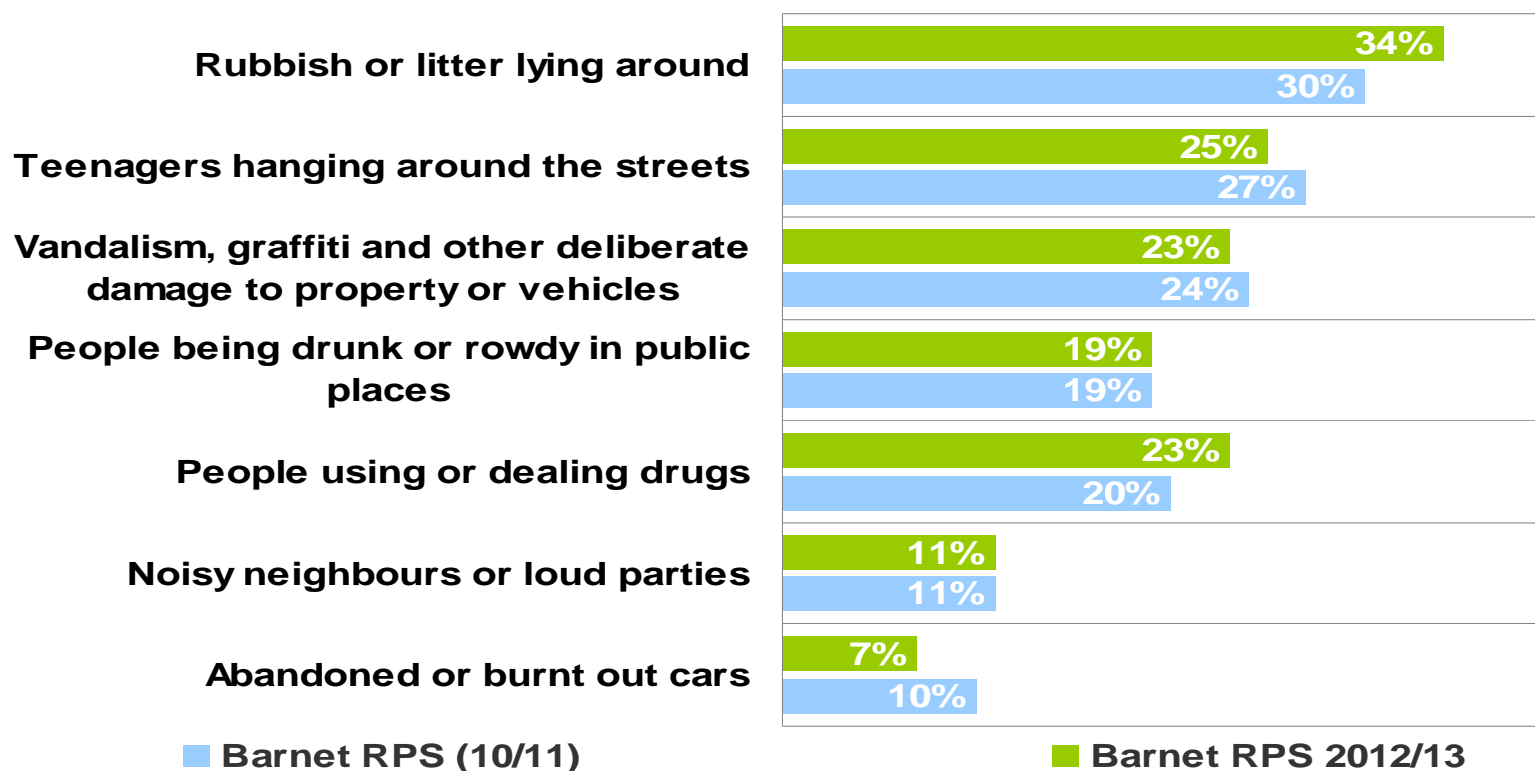
# Priority 2 Anti-social behaviour

Target – percent very / somewhat worried about	Baseline 2010/11 (Public Attitude Survey)	Public Attitude Survey 12/13 (Q3)	Residents Survey 10/11	Residents Survey 12/13
ASB	24%	24%		
Teenagers hanging around on the streets	21%		27%	25%
Rubbish / litter	21%		30%	34%
Vandalism, graffiti and other deliberate damage	19%		24%	23%
Drunk / rowdy in public place	9%		19%	19%
Noisy neighbours or loud parties	10%	7%		
Local drug use / dealing	13%	10%		
Abandoned or burnt out cars	5%	3%		
Gangs	9%	2%		

# Anti social behaviour – residents survey

Thinking about your local area how much of a problem are the following?

% saying a great deal or to some extent

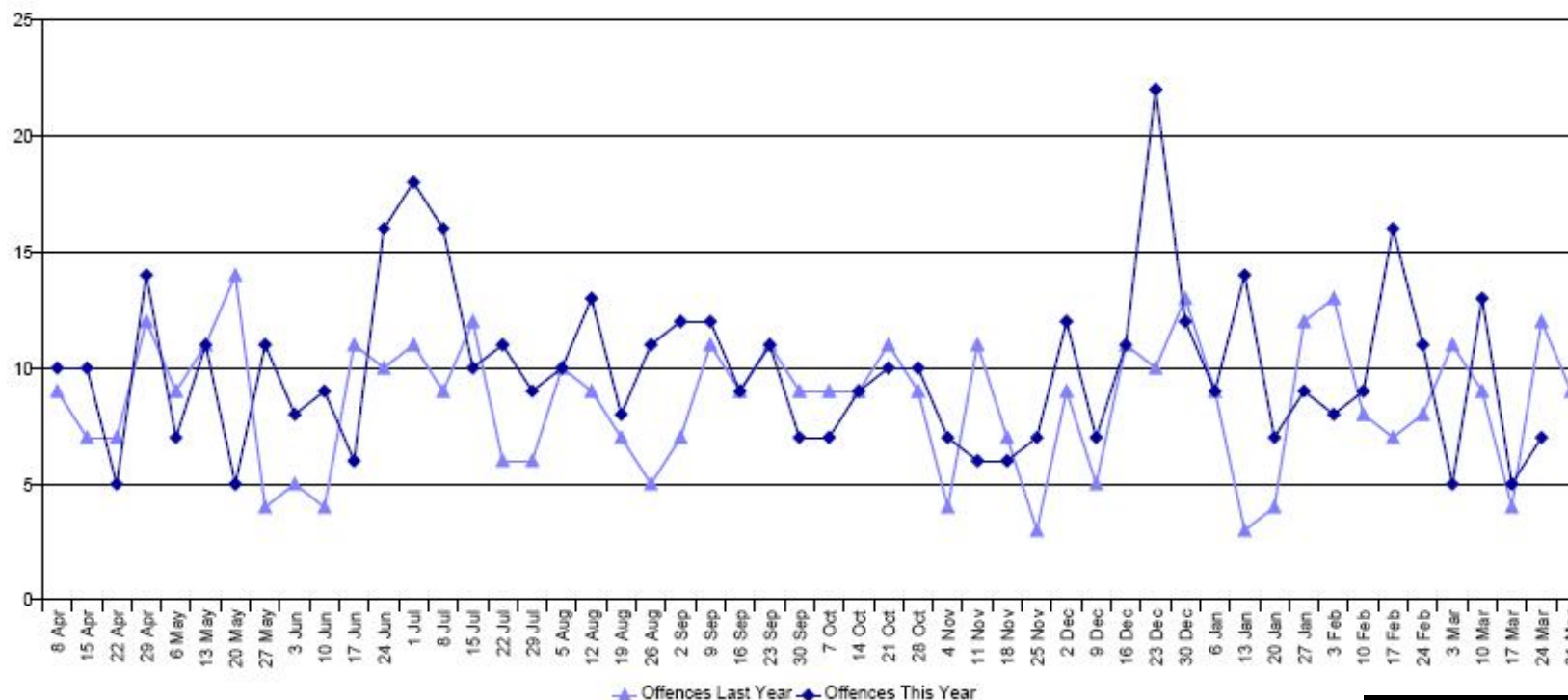


Base : 1602



# Priority 3 Violent crime with a specific focus on domestic violence

Weekly Domestic Violence VWI Performance - Barnet



KPI 1 Violence With Injury	
<a href="#">VWI</a>	
<a href="#">Domestic Violence VWI</a>	

	This year	Last year	Change	SD Target	FYTD 12/13	FYTD 11/12
	1,425	1,525	-6.6 %	34%	33.0%	37.6%
	512	442	+15.8 %	51%	51.0%	56.8%



# Priority 4: Barnet Integrated Offender Management Unit

- Performance for the first 6 months and the predicted performance for the first 12 months if the current trends are maintained. This would anticipate a reduction in costs of £156,000 (based on Home Office costing guidelines) for Home Office Recordable offences.
- Pre IOM dates 12 months from 6<sup>th</sup> June 2011, first 6 months data 6<sup>th</sup> June 2012 to 5<sup>th</sup> Nov 2012

	Total Convictions Pre IOM	Total Convictions Post IOM (first 6 months)	Total Convictions Predicted for 12 Month Period	Reduction Number (percentage)
Stat Offender	259	82	164	95 (36%)
Home office Recordable offences	135	28	56	79 (58%)
Non Stat Offender	125	40	80	45 (37%)
Home Office Recordable offences	55	7	14	41 (74%)

*Pre IOM dates 12 months from 6th June 2011, first 6 months data 6th June 2012 to 5th Nov 2012*

## The Future

It is proposed that the IOM Cohort is at least doubled from its current membership to over 200 individuals, this will now include Gang Members, Sentence Expiry Date prison releases, Female offenders and those being arrested but failing drug testing in custody and then failing to access Drug Rehabilitation facilities.



# Priority 5 Broader cost-effective intervention

How will we know if we are succeeding?

Target	Baseline 2010/11	
Number of families covered by expanded Family Focus programme	9	 April 2013 386

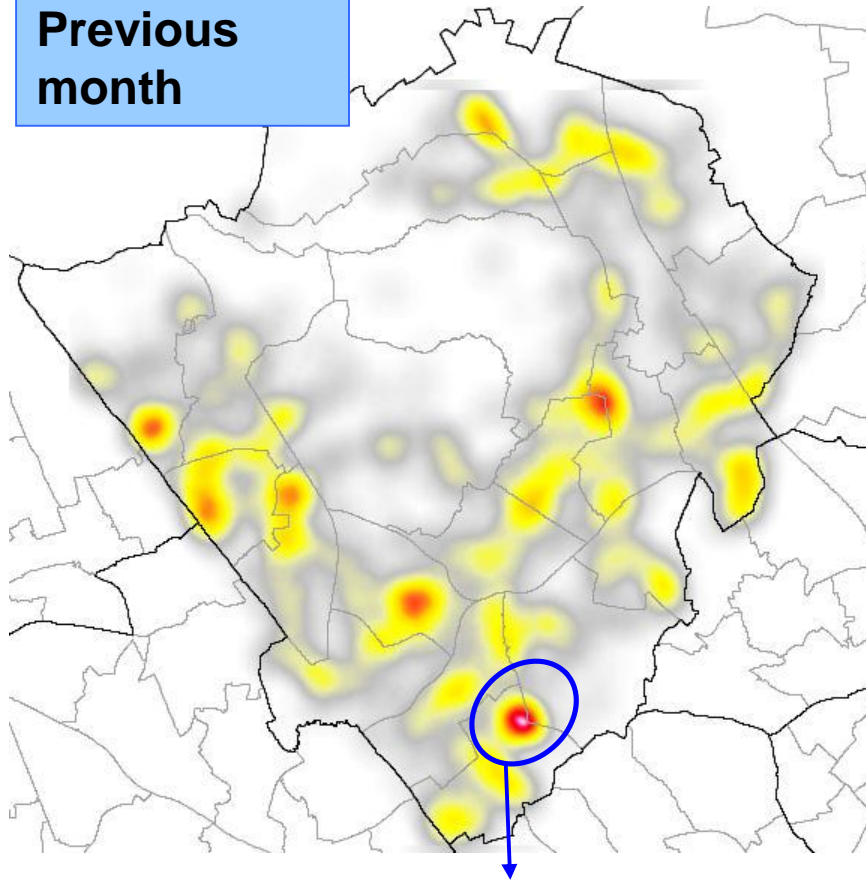
Update briefing from Stuart Collins (Troubled families coordinator LBB)



# Priority 6 Focus on places where offences take place

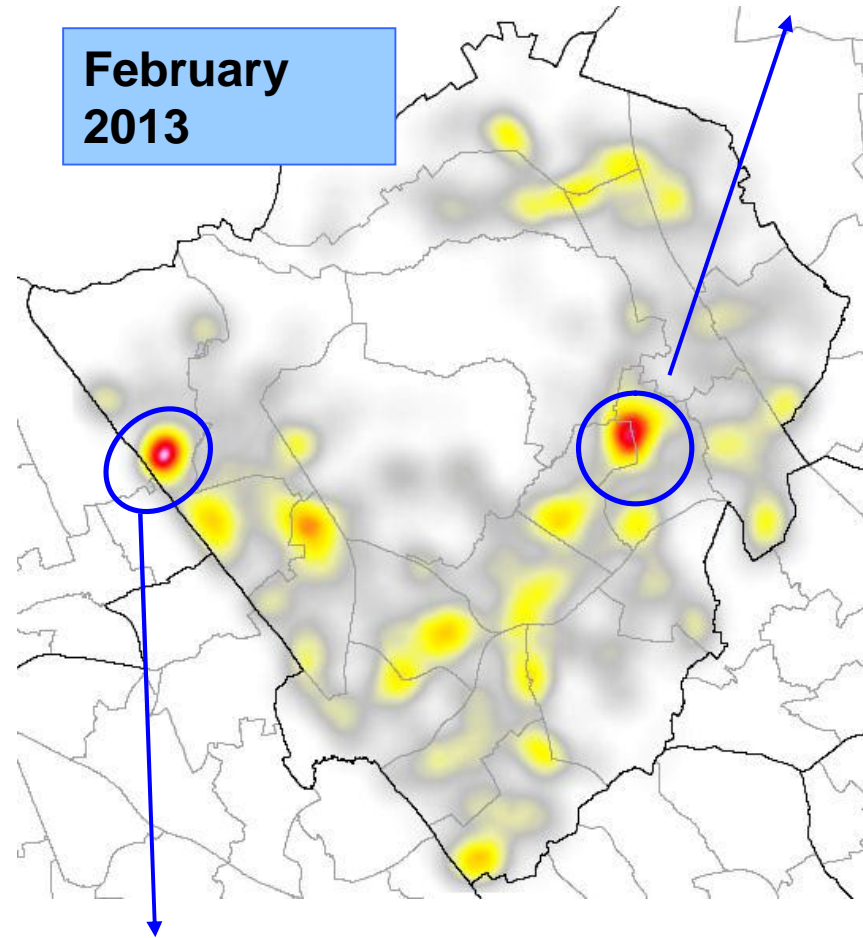
Barnet - TNO hotspots February 2013

Previous month



Golders Green

February 2013



Edgware (55 allegations)



# Priority 7 Tackle repeat victimisation

Target	Baseline 2010/11 (based on map- info)	2012/2013
Repeat residential burglary	6.3%	5.3% (27 fewer repeat burglaries)
Reduce repeat victimisation - ASB		See below
Reduce repeat victimisation for those domestic violence cases managed by a MARAC	8%	Awaits figure from DV coordinator

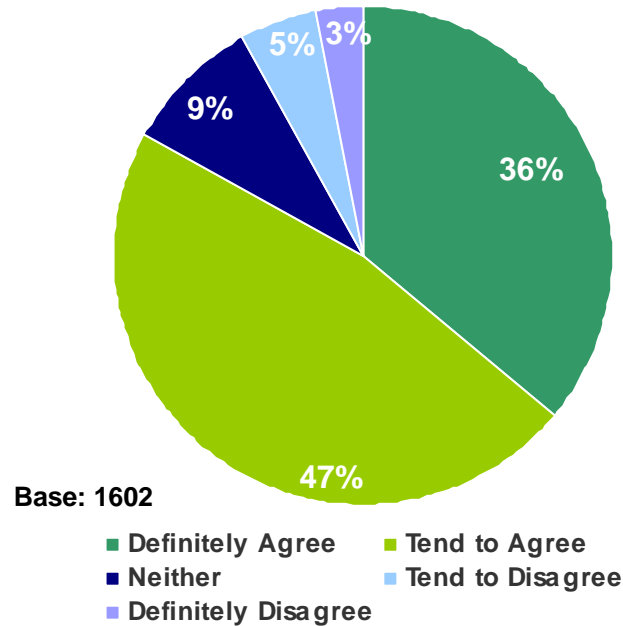
**% ASB Repeat Callers By Borough Over The Last 24 Weeks By 4 Week Period**

Borough	Area	Period				
		(1) 04/03/2013 - 31/03/2013	(2) 04/02/2013 - 03/03/2013	(3) 07/01/2013 - 03/02/2013	(4) 10/12/2012 - 06/01/2013	(5) 12/11/2012 - 09/12/2012
Barnet	North	9%	10%	10%	10%	9%

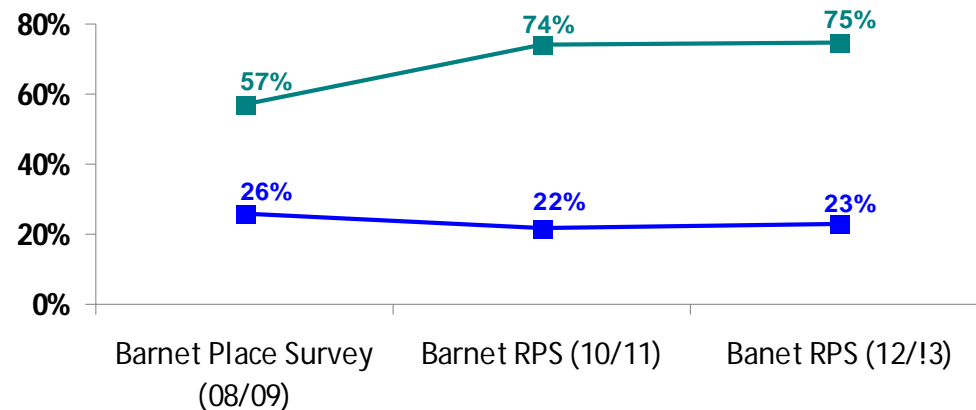


# Priority 8 Building reassurance and confidence

## Cohesion perception measures remain high in Barnet



83 per cent of residents agree that people from different backgrounds get on well together in Barnet



Strong sense of belonging and people treating each other with respect, consistent with 2010/11

- Strong sense of belonging to the local neighbourhood
- People not treating each other fairly and with respect and consideration

# Residents satisfaction with police and council

How satisfied are you that Barnet Police and Barnet Council are dealing with antisocial behaviour and crime in your local area?

